

Fotospeed

Test Chart Printing Instructions

Photoshop 6 - CS6



www.fotospeed.com

Contents

Introduction.....	3 - 4
Colour Settings.....	5
Printing the Test Chart.....	6
Photoshop Settings.....	7-9
Adobe 6-CS1.....	7
Adobe CS2.....	7
Adobe CS3.....	8
Adobe CS4.....	8
Adobe CS5.....	9
Adobe CS6.....	9
PC	
Epson printer driver settings.....	10-12
Epson R2400, 1800, 800 and 1400.....	10
Epson R2880, R 3000, 3800 and 3880.....	11
Epson 1290 & 2100.....	11
Epson 1900.....	12
Canon.....	13
HP.....	14
MAC.....	15-16
Installation Instructions.....	17
Using your Profiles Correctly.....	18-20

Fotospeed

TEST CHART PRINTING INSTRUCTIONS

Photoshop 6-CS6 for Epson, Canon and HP Printers

PC and MAC

INTRODUCTION

One of the prime concerns of many photographers when producing inkjet prints is the ability to reproduce onto paper what is seen on the computer screen. The main reason for this is the simple, but little known fact, that all printers interpret colour differently. Each one has an in-built generic profile that it uses to describe the colour that it “should” produce. This is built in by the manufacturer and, in reality, is a ‘guess’ at what the printer should do. The guess is often wrong. A profile is essentially a description (a label or tag) of the characteristics of a device. For instance, each time you take a picture with a digital camera it will embed a profile within each image file. This profile is a description of the colour within that image file, which is a known international standard.

In order to ensure that the colour description is carried through to the printer an output profile needs to be built for each paper that is used on a particular inkjet printer using a particular ink set and paper combination. An output profile will deliver known, consistent colour to your inkjet printer. This is done by converting the colour values in the input profile accurately to the output profile ensuring that the original colour description is maintained; much like a translation between 2 languages.

Building an output profile is a simple process. However, like most things in life, particularly computing, the process must be set up correctly. The first part of this process is to print a test chart that will be used to create the profile. The test chart is the first building block to creating accurate printer output. It is essential that it is printed using the correct procedure. This is not difficult to do but, if you are unfamiliar with colour management, it can easily be done incorrectly. If printed incorrectly then the subsequent output profile will be incorrect. Following the instructions will ensure that the test chart printing process is carried out correctly and you will be guaranteed consistent, accurate colour each and every time you create a print. This will increase your enjoyment as well as saving time and money in reduced waste of paper, ink and time.

In order for an output profile to work correctly it is essential that the colour management (Colour Control) within the printer is switched off. If left on it will conflict with your custom profile resulting in inaccurate colour reproduction. There are many different printers on the market today and many of them use different methods of switching off the colour management within them.

In order for an output profile to work it must be able to convert from an input profile, as mentioned earlier. In order for an input profile to be available you must use a graphics program that is capable of colour management. The best and most used by digital photographers are Adobe

Photoshop or Adobe Elements. Therefore the procedure that will be described for producing the output profile will be using Photoshop. The process in Adobe Elements, which is similar, will also be covered.

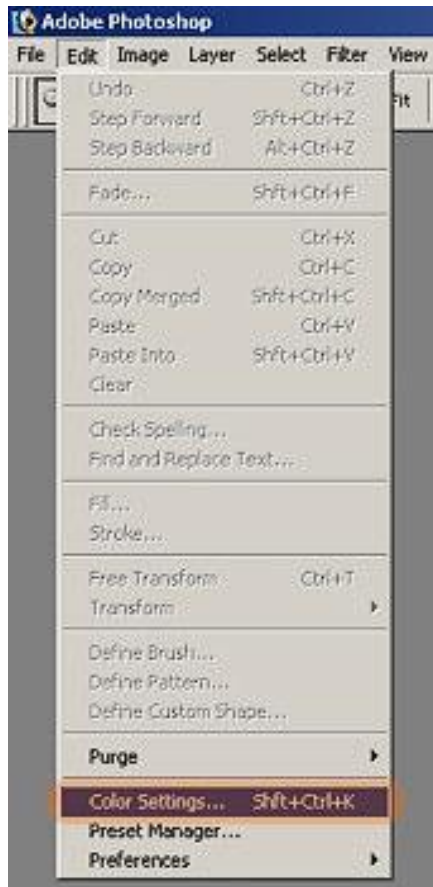
It is essential that the test charts are printed correctly so please ensure that you follow the instructions precisely. If you provide an accurate test chart then you will be given an accurate profile. Equally, remember that garbage in = garbage out

Print the test chart on each paper that you want profiled, complete the Booking Form and post the chart to the address shown at the bottom of the Booking Form.

PLEASE READ THE INSTRUCTIONS CAREFULLY

NB: We have recently signed up with a piece of software called [Log Me In](#). This software allows one of our technical team to access your computer remotely, with your permission. We can then cover the whole process of profiling, from setting your colour settings and printing the test chart, all the way up to installing your profiles and printing your calibration page. There is a small charge of £15 for 20mins of this fantastic service.

Colour settings



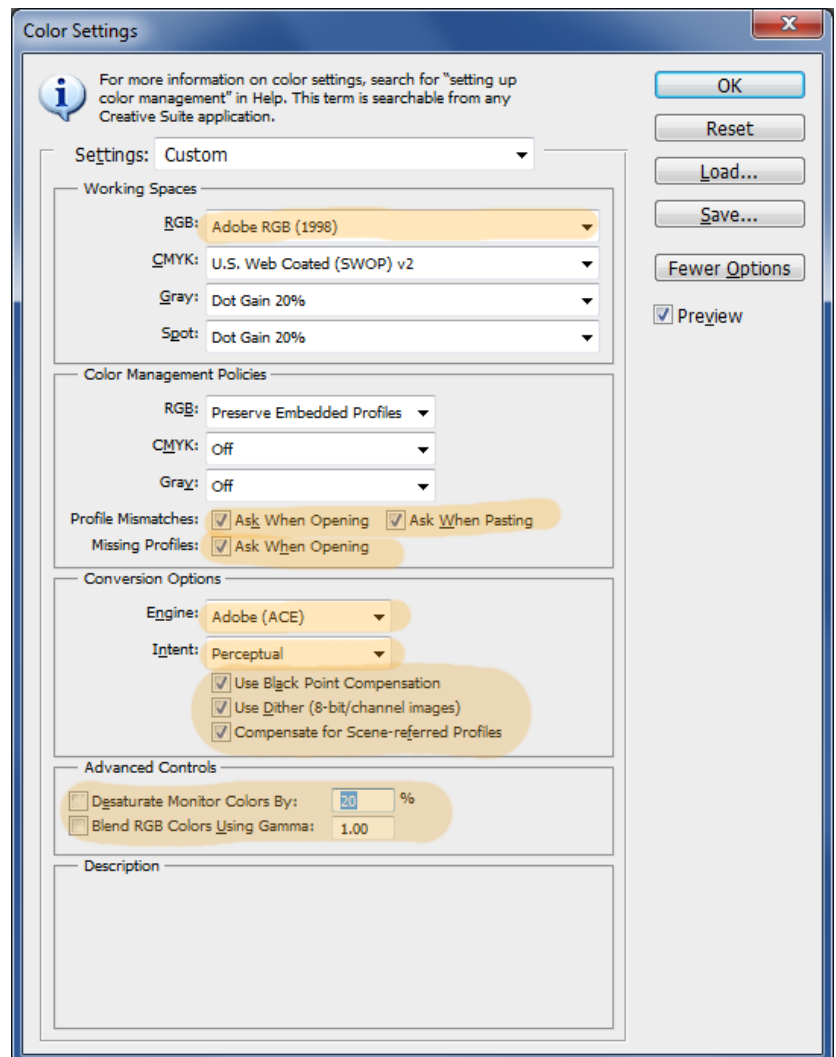
Preparation

Carry out a nozzle-check to ensure that all nozzles are firing correctly and there are no gaps in the printed pattern. Clean if necessary.

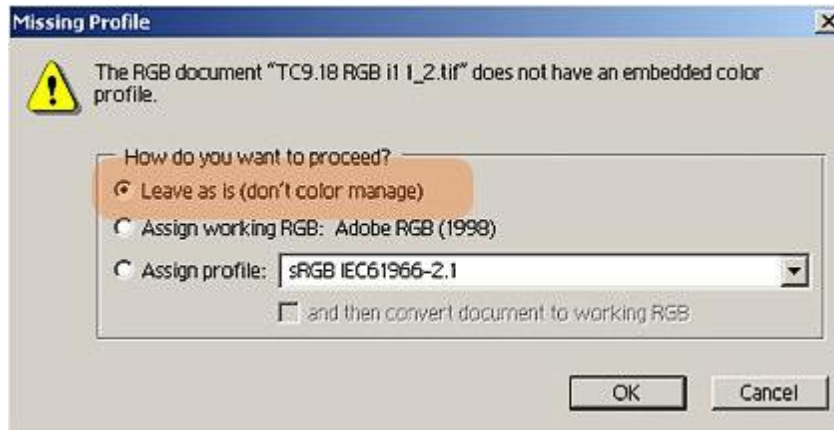
Open Photoshop.

Select Edit> Colour Settings

First set the colour settings as below (Some of the settings are only applicable to later versions of PS, ignore any settings that are not visible on your colour settings screen):



Printing the Test Chart



Open the test chart TC9.18 RGB i1s(A4).tif and the message should appear as left. (If not recheck your colour settings)

Select "Leave as is (don't colour manage)"

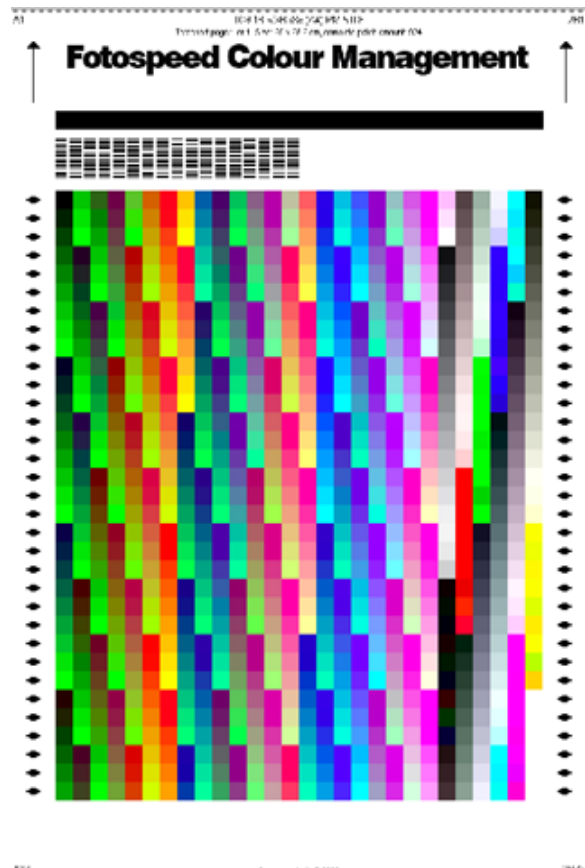
The image should appear as is right -

DO NOT CHANGE THE PHYSICAL SIZE OF THE IMAGE

It will fit on 1 sheet of A4 paper

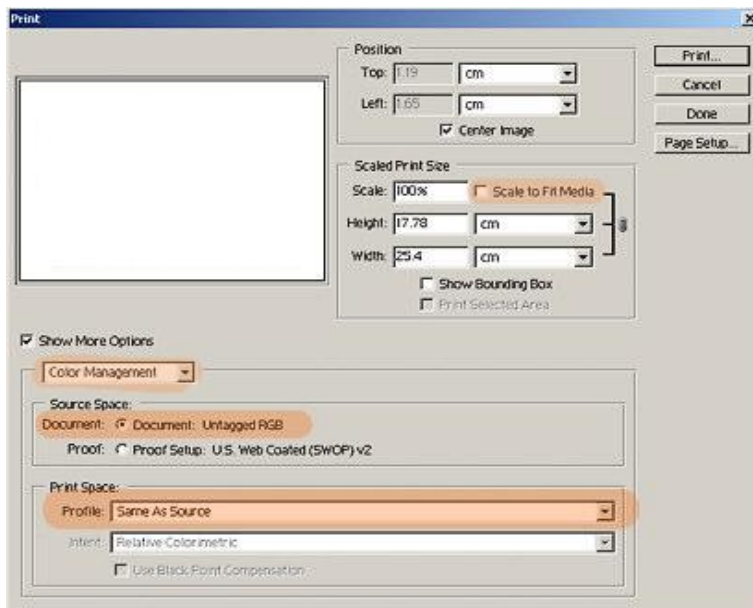
The procedure from this point on will vary depending upon whether you are using Photoshop or Elements and which version of the application you are using. All variations will be covered. Additionally, the procedures for setting the printer correctly will differ depending upon which printer you are using and whether you are a PC or Mac user.

The test chart cannot be printed via Adobe Lightroom.



Select your version of Adobe Photoshop:

Photoshop 6- CS1



Select File > Print

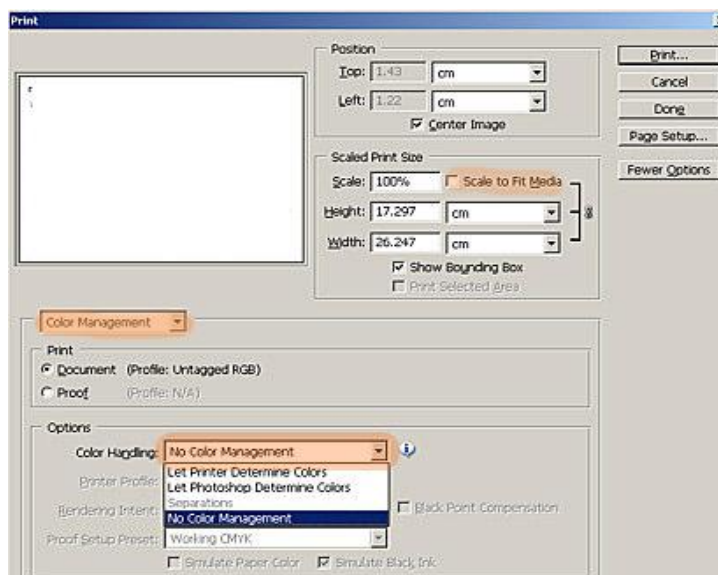
Leave Scale to fit media unchecked

Select Show More Options> Colour Management and Document Untagged

In Profile select Same As Source

Now Select Print...

Proceed to page 10 for PC printer settings or page 15 for MAC printer settings



Photoshop CS2

Select File > Print with Preview

Leave Scale to fit media unchecked

Select Colour Handling>No Colour Management

Now Select Print...

Proceed to page 10 for PC printer settings or page 15 for MAC printer settings

Photoshop CS3

Select File > Print

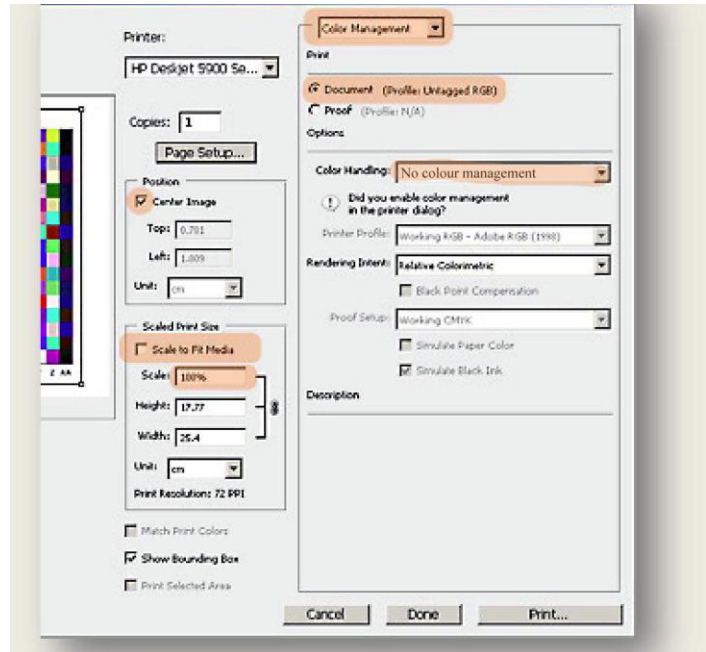
Ensure the correct printer is selected, in the picture on the right. (If you have more than one printer)

Leave Scale to fit media unchecked

Select Colour Handling>No Colour Management.

Now Select Print...

Proceed to page 10 for PC printer settings or page 15 for MAC printer settings



Photoshop CS4

Select File > Print

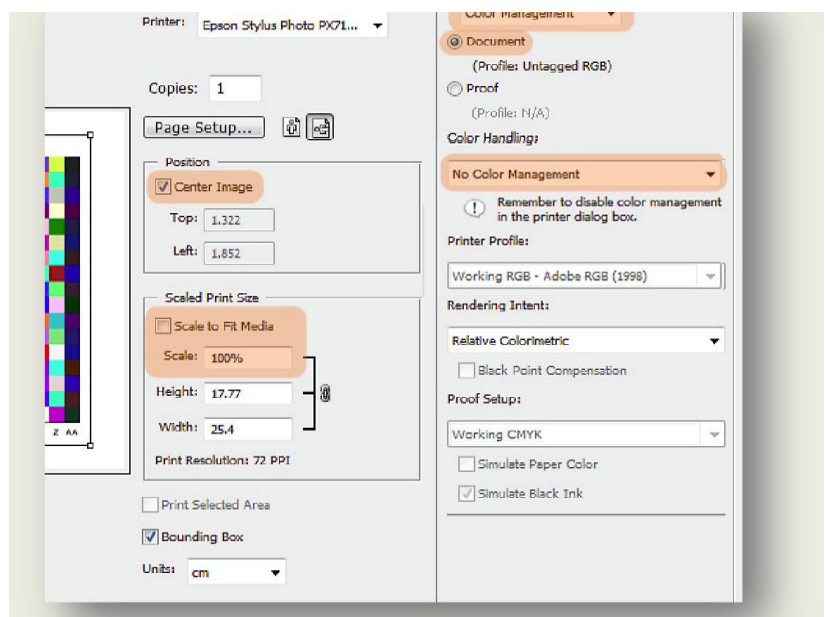
Ensure the correct printer is selected, in the picture on the right. (If you have more than one printer)

Leave Scale to fit media unchecked

Select Colour Handling>No Colour Management

Now select OK>Page Setup...

Proceed to page 10 for PC printer settings or page 15 for MAC printer settings



Photoshop CS5

Select File > Print

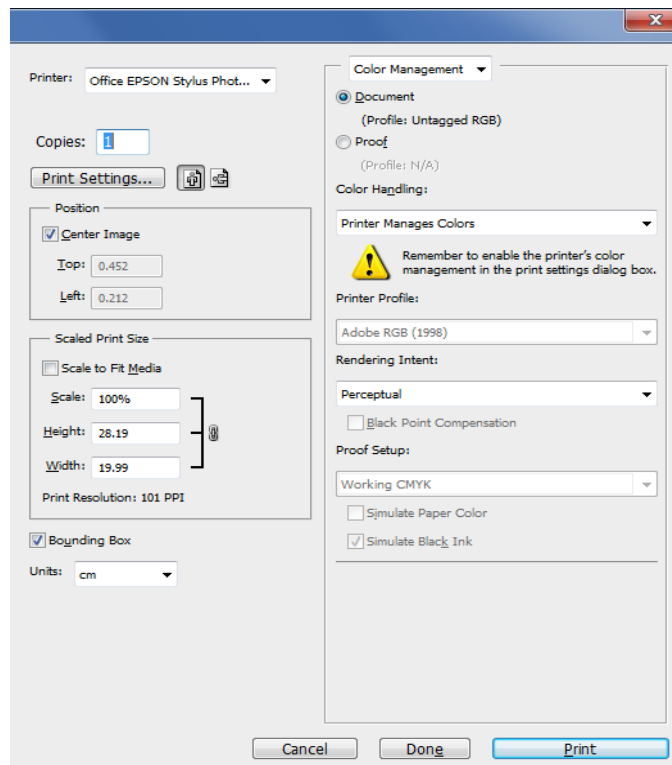
Ensure the correct printer is selected, in the picture on the right. (If you have more than one printer)

Leave Scale to fit media unchecked

Select Colour Handling>Printer Manages Colours

Now select OK>Print Settings...

Proceed to page 10 for PC printer settings or page 15 for MAC printer settings



Photoshop CS6

Select File > Print

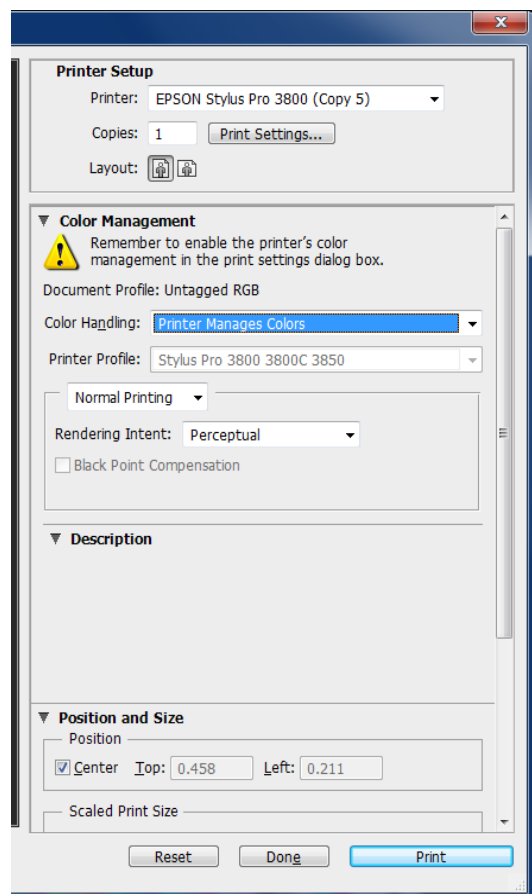
Ensure the correct printer is selected, in the picture on the right. (If you have more than one printer)

Leave Scale to fit media unchecked

Select Colour Handling>Printer Manages Colours

Now select OK>Print Settings...

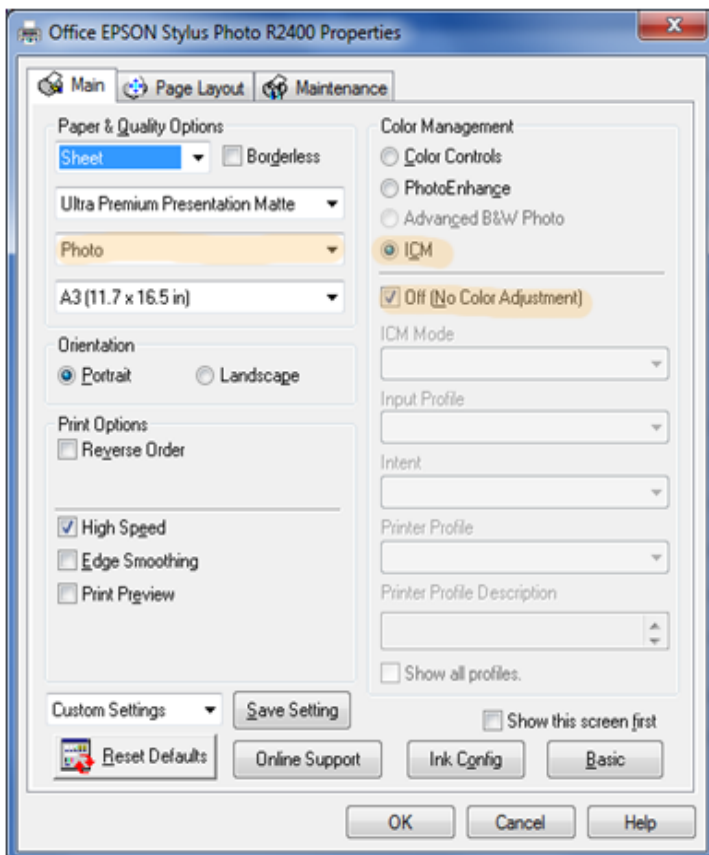
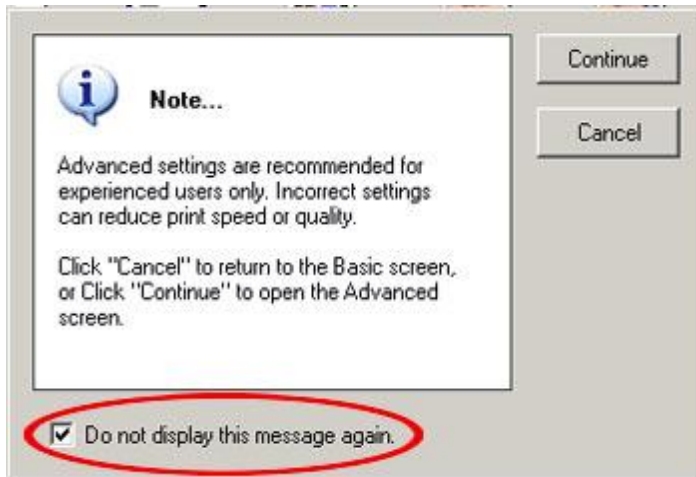
Proceed to page 10 for PC printer settings or page 15 for MAC printer settings



PC

Epson Printer Driver Settings

Begin by selecting Advanced; in many of the Epson printers you may see the below message. Tick the empty box and select continue.



Printer Settings – Epson R2400, 1800, 800 and 1400

Select Advanced and you will see the window left.

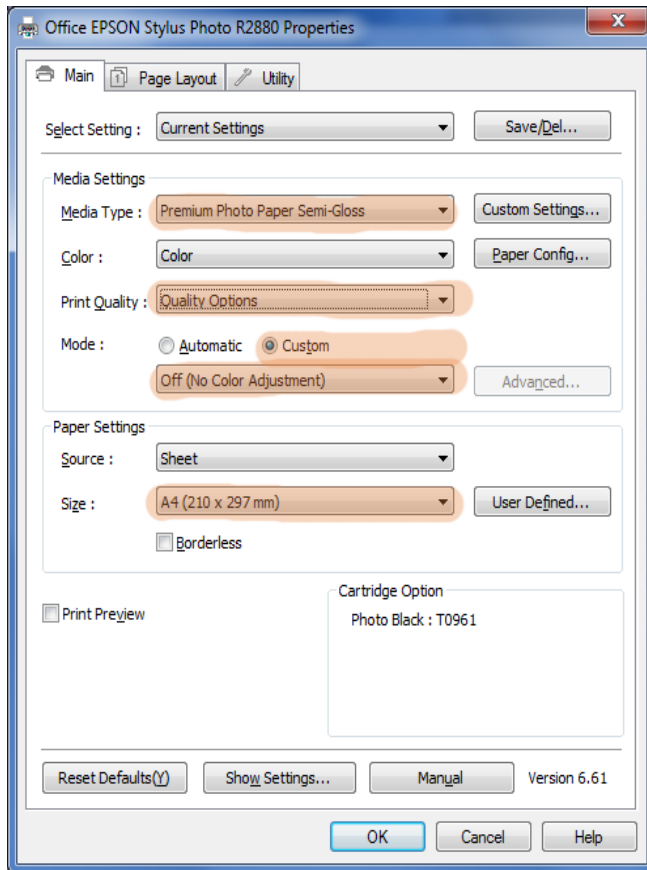
Either Premium Semi-Gloss for any gloss type paper or Archival Matte/Ultra Premium Presentation Matte according to what option is available.

Click the drop down box on Print Quality and select Photo

You need to make sure colour management is turned off in the printer. To do this select ICM and choose Off (no colour adjustment)

Make sure the paper size is A4.

DO NOT SELECT BORDERLESS



Printer Settings – Epson R2880, R2000, R3000, 3800 & 3880

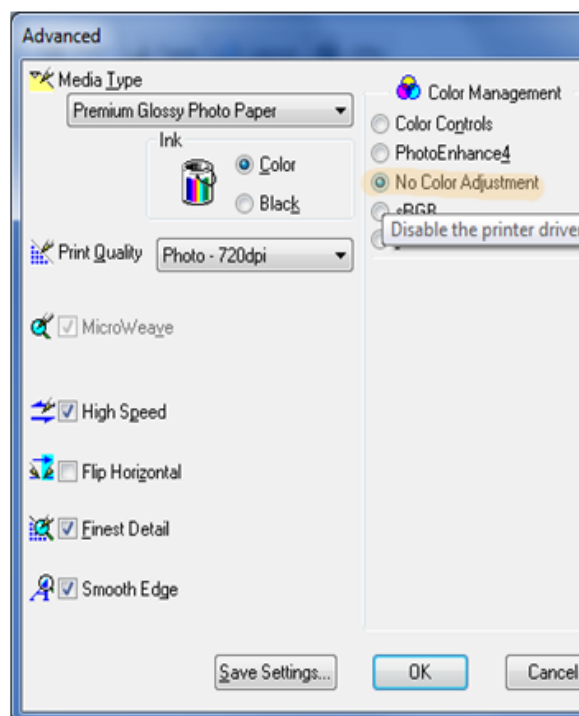
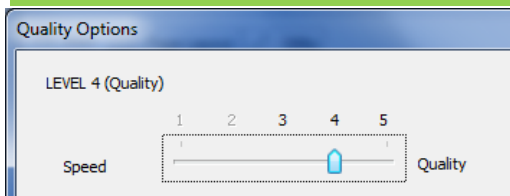
Select your paper type as left.

Either Premium Semi-Gloss for any gloss type paper or Archival Matte/Ultra Premium Presentation Matte according to what option is available.

Select Quality Option and 4 as quality. See below

You need to make sure colour management is turned off in the printer. To do this select Custom and choose Off (no colour adjustment). Make sure the paper size is A4.

DO NOT SELECT BORDERLESS



Printer Settings – Epson 1290, 2100

Select Custom>Advanced and you will see this window left.

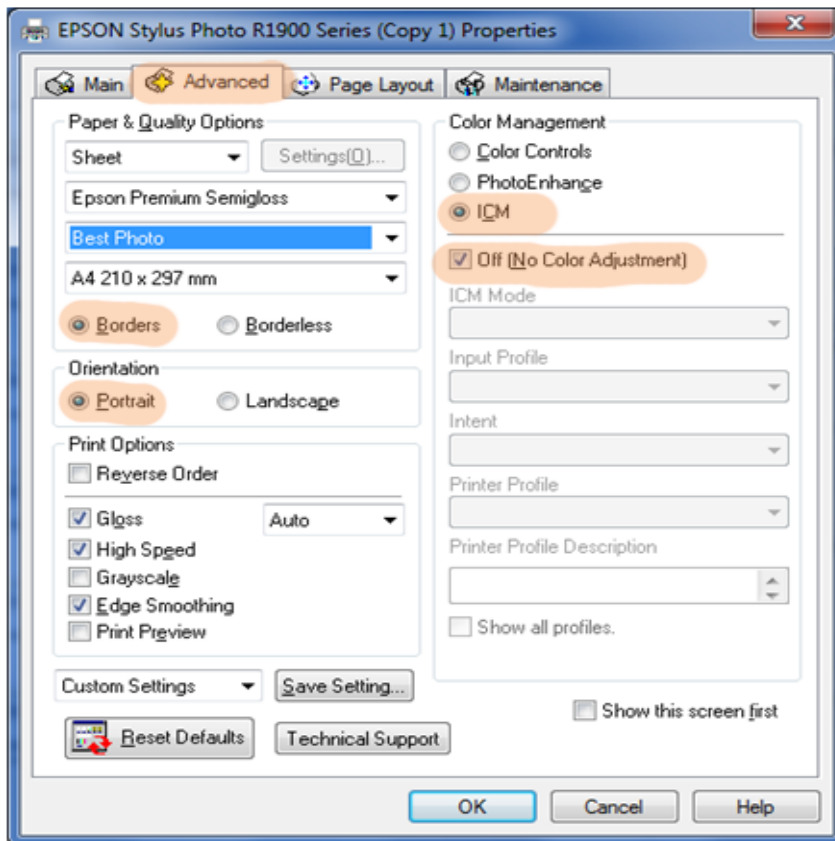
Either Premium Semi-Gloss for any gloss type paper or Archival Matte/Ultra Premium Presentation Matte according to what option is available.

You need to make sure colour management is turned off in the printer. To do this, select No Colour Adjustment

Make sure the paper size is A4.

DO NOT SELECT BORDERLESS

Printer Settings – Epson R1900



Select Advanced and you will see the window left.

Either Premium Semi-Gloss for any gloss type paper or Archival Matte/Ultra Premium Presentation Matte for matte paper..

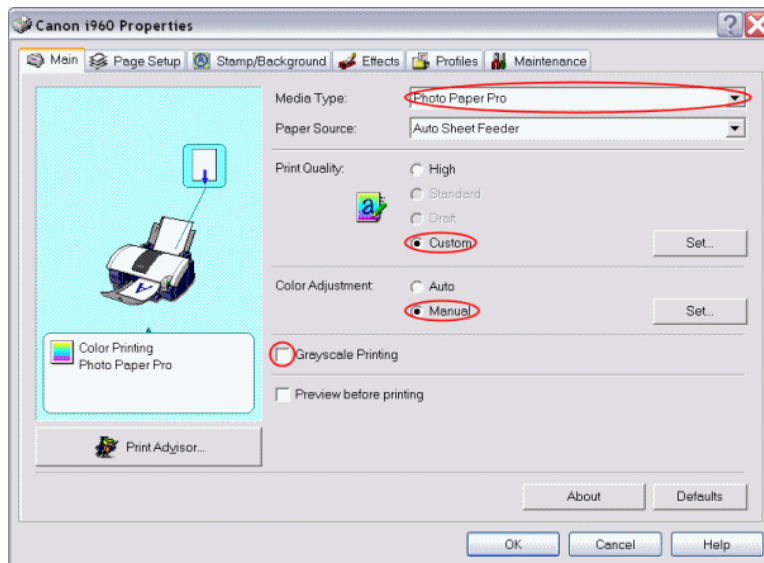
Click the drop down box on Print Quality and select Best Photo

You need to make sure colour management is turned off in the printer. To do this select ICM and choose Off (no colour adjustment)

Make sure the paper size is A4.

DO NOT SELECT BORDERLESS

Canon Printer Driver Settings

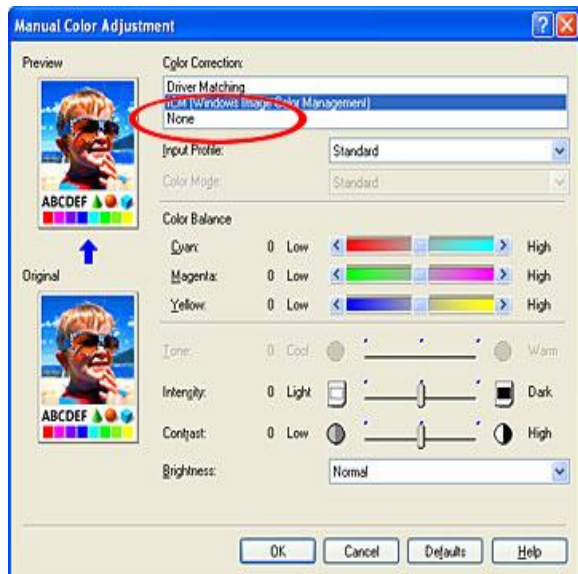


Select your paper type.

Either Premium Semi-Gloss for any gloss type paper or Archival Matte/Ultra Premium Presentation Matte according to what option is available.

You need to make sure colour management is turned off in the printer. One of two Manual colour adjustment windows below will represent your printer).

To do this select Colour

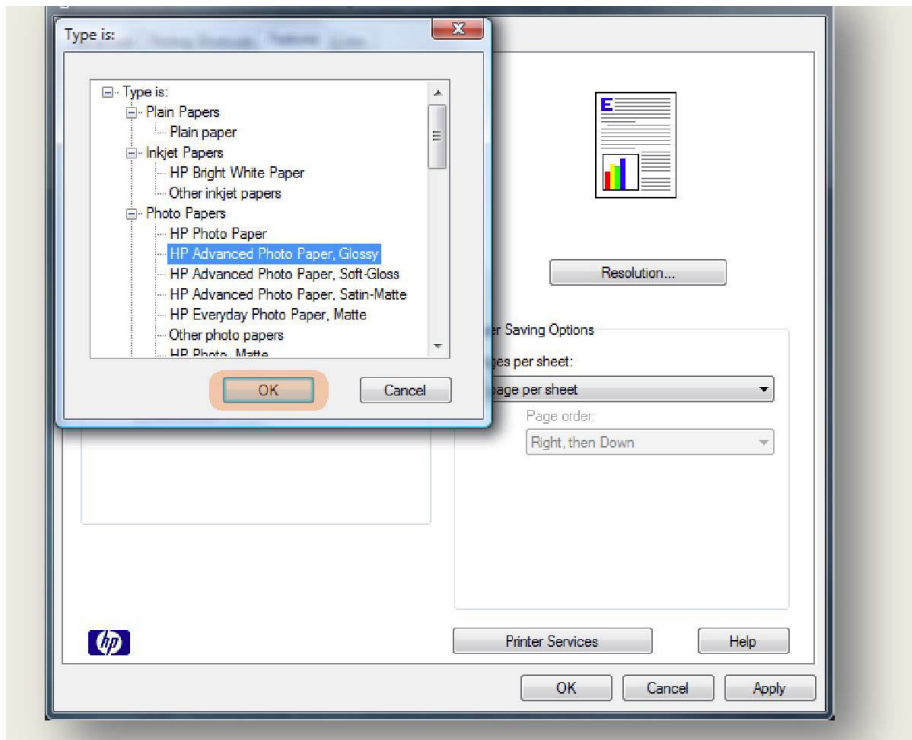


Adjustment>Manual>Set. Then select either None or leave Enable ICM as unchecked and printer type as none. Make sure the paper size is A4.

Do not select borderless as it needs to be printed as is. Set the quality to Best.



HP Printer Driver Settings



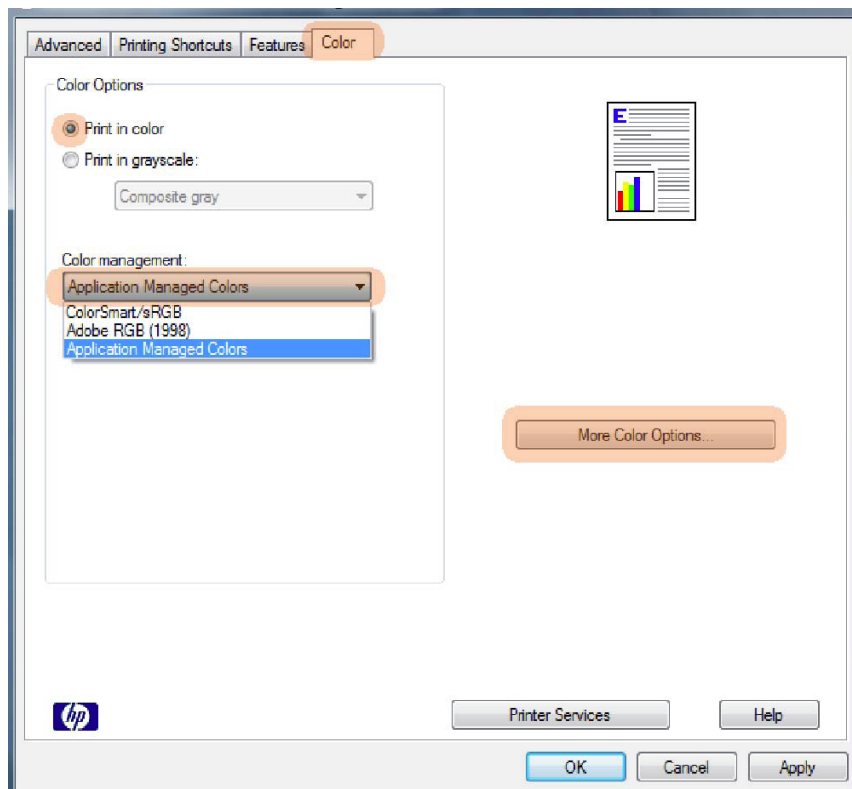
Select your paper type.

Either Premium Semi-Gloss for any gloss type paper or Archival Matte/Ultra Premium Presentation Matte according to what option is available.

You need to make sure colour management is turned off in the printer. Select Colour>Colour Management>Application Managed Colours

Make sure the paper size is A4.

Do not select borderless as it needs to be printed as is. Set the quality to Best.



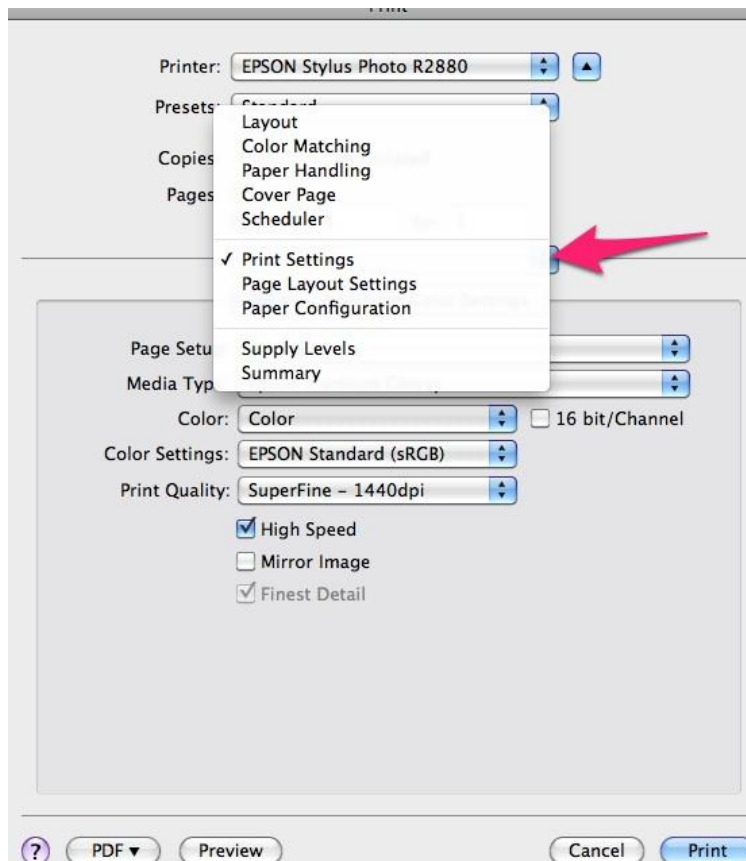
MAC

It may appear that the MAC printer driver instructions are not as thorough; however this is not the case. With MAC computers it doesn't really matter which printer you are using, the settings will always be the same. You will find that the software applications such as Photoshop and Photoshop Elements are basically identical to the Windows versions, and the same settings can be used.

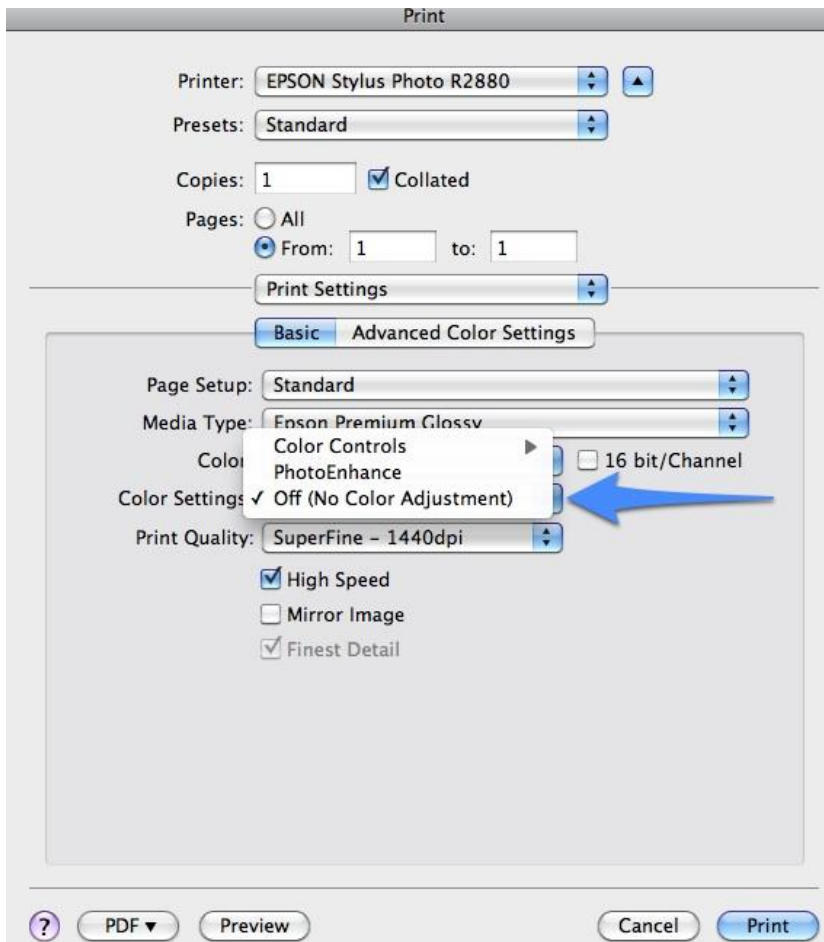
With the introduction of OSX 10.5 and 10.6 (Leopard and Snow Leopard), there were also some fundamental changes to the way colour management and the printer drivers work. Initially this caused some major problems, but for the most part, these are now fixed. It is **very important to download the latest printer driver** for your printer before attempting to get your printer profiled – some drivers did not work with the new operating systems at first, and new versions were released to fix this.



First select your printer



Click the third drop down box and select print settings



Select your paper type.

Either Premium Semi-Gloss for any gloss type paper or Archival Matte/Ultra Premium Presentation Matte according to what option is available.

You need to make sure colour management is turned off in the printer. Click the drop down tab next to Colour settings and select Off (no colour adjustment)

Choose Superfine 1440dpi for Print Quality.

Then press print.

Profile Installation Instructions - PC

1. Save the profile to somewhere convenient – My Documents or Desktop.
2. Right-click on the saved file (which should show as an RGB triangle).
3. Select the top option from the menu – Install Profile.
4. Open Photoshop. If already open then close and reopen.
5. So where has your profile been put? Navigate to My computer/ local disk C / windows / system32 / spool / drivers / color
And there you are, this is where your profiles are.
6. To use your profiles correctly go to page 18-20 of your Test Chart Printing Instructions.
7. To uninstall your profile either right click on the profile on the desktop and choose UNINSTALL or go to the profile as shown in and delete it.

Profile Installation Instructions - Mac

1. Drag and drop the profile onto your desktop.
2. Navigate to: HD/ Your name/ Library/ ColorSync/ Profiles
3. Drag and drop the profile into the profile folder.
4. Open Photoshop. If already open then close and reopen.
You cannot rename your profiles. Only we as the creator can.
5. To use your profiles correctly go to page 18-20 of your Test Chart Printing Instructions.

Using your profiles correctly

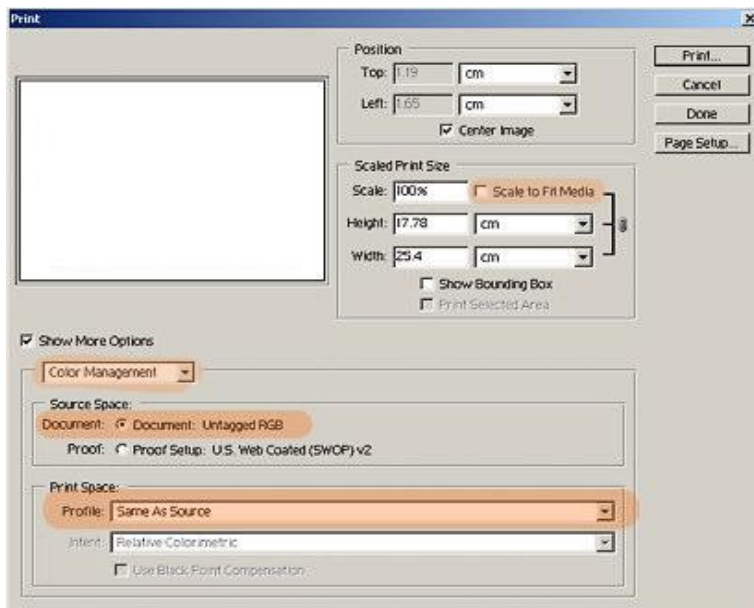
To use your profiles correctly it is important to follow the below instructions:

You will remember the below windows from pages 7-9.

Photoshop 6-CS1

Click the drop down box next to Profile and scroll down to the sixth block of profiles down. Your profile will be there starting 1FS...

Make sure to turn off colour management in your printer as you did when printing the test chart.

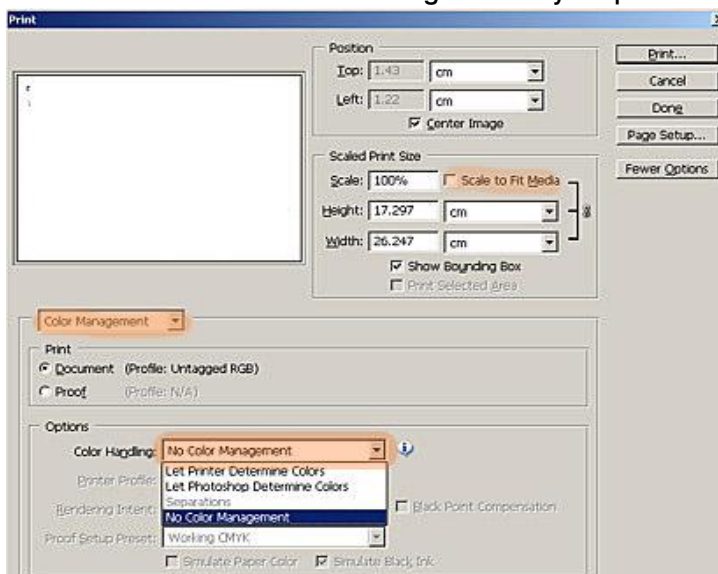


Photoshop CS2

Under colour handling select the option, **Let Photoshop Determine Colours.**

The printer Profile box will now become available. Your profile will be located in the sixth block of profile down starting 1FS...

Make sure to turn off colour management in your printer as you did when printing the test chart.

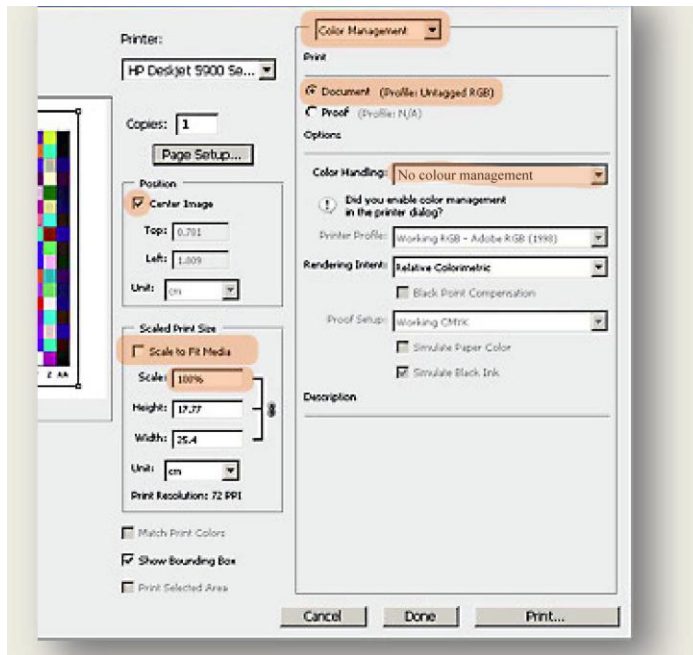


Photoshop CS3-CS4

Under colour handling, select **Let Photoshop Manage Colours**.

The printer Profile box will now become available. Your profile will be located in the sixth block of profile down starting 1FS...

Make sure to turn off colour management in your printer as you did when printing the test chart. Select **Perceptual** for Rendering Intent and tick **Black Point Compensation**

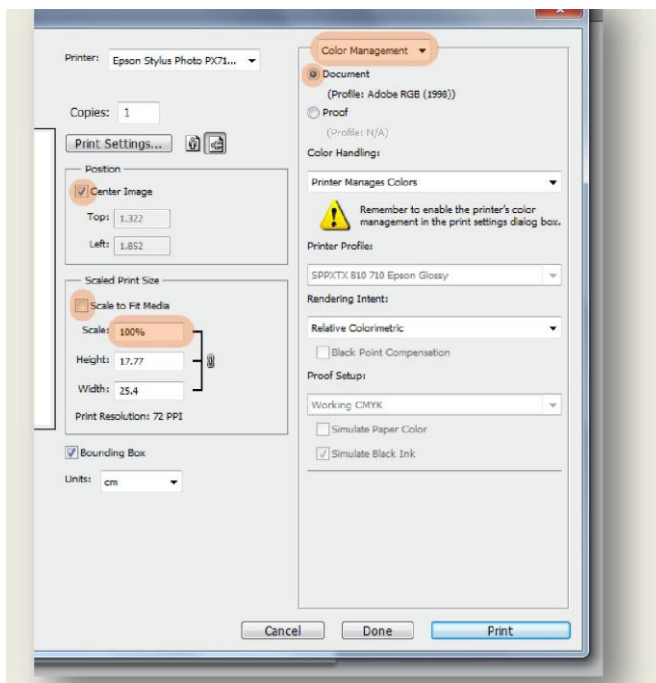


Photoshop CS5

Under colour handling, select **Let Photoshop Manage Colours**.

The printer Profile box will now become available. Your profile will be located in the sixth block of profile down starting 1FS...

Make sure to turn off colour management in your printer as you did when printing the test chart. Select **Perceptual** for Rendering Intent and tick **Black Point Compensation**



Photoshop CS6

Under colour handling, select **Photoshop Manages Colours**.

The printer Profile box will now become available. Your profile will be located in the sixth block of profile down starting 1FS...

Make sure to turn off colour management in your printer as you did when printing the test chart. Select **Perceptual** for Rendering Intent and tick **Black Point Compensation**

